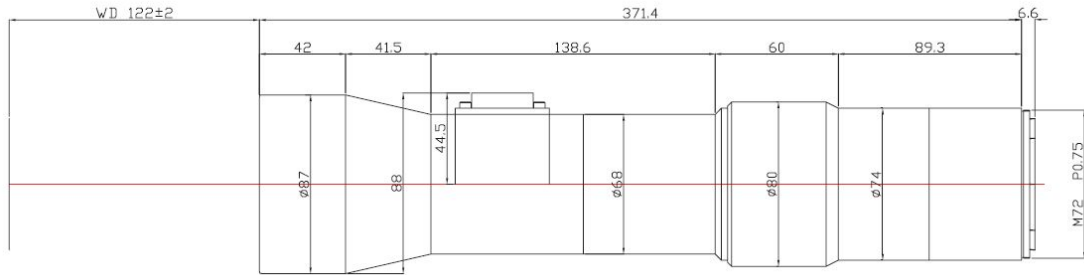


TL12K-10-122C



The Object Side Telecentric Lens TL12K-10-122C is suitable for sensors with an image format of 12K (5um).

Technical Data

Magnification	1 X
Working Distance (WD)	122 mm
Depth of Field (DOF)	200 μm @CoC μm
Resolution (Object Side)	6.7 μm
Image Format (max.)	12K (5um)
Working F-Number	10
Numerical Aperture (NA)	0.05
Field of View (FOV)	61,4 mm @ 12K
Telecentric Type	Object Side
Telecentricity	0.04 °
Optical Distortion (max.)	0.02 %
Mount Type	M72

