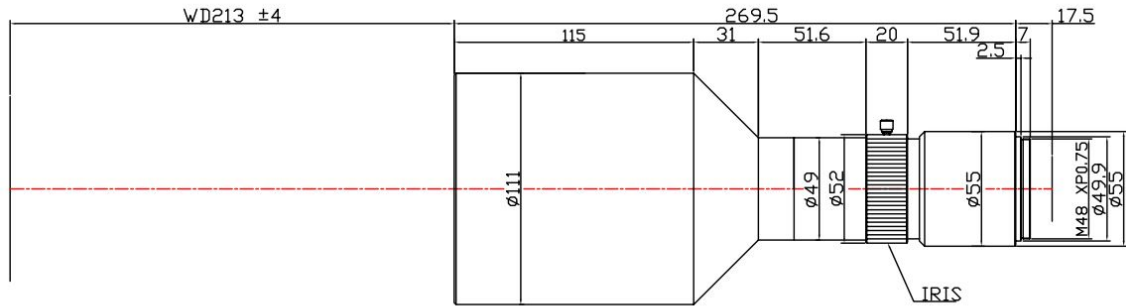


# TF8MHR-0385-130I



The Object Side Telecentric Lens TF8MHR-0385-130I is suitable for sensors up to 8 megapixel and with an image format of 23mm (diagonal).

## Technical Data

Art.Gr.	TEL
Magnification	0.385 X
Working Distance (WD)	132 mm
Depth of Field (DOF)	2100 $\mu\text{m}$ @CoC 22 $\mu\text{m}$
Resolution (Object Side)	12.4 $\mu\text{m}$
Image Format (max.)	23mm (diagonal)
Megapixel (max.)	8 MP
Working F-Number	7.1
Numerical Aperture (NA)	0.027
Field of View (FOV)	47.1mm x 35.3mm
Telecentric Type	Object Side
Telecentricity	0.015 °
Optical Distortion (max.)	0.03 %
Mount Type	F-Mount

