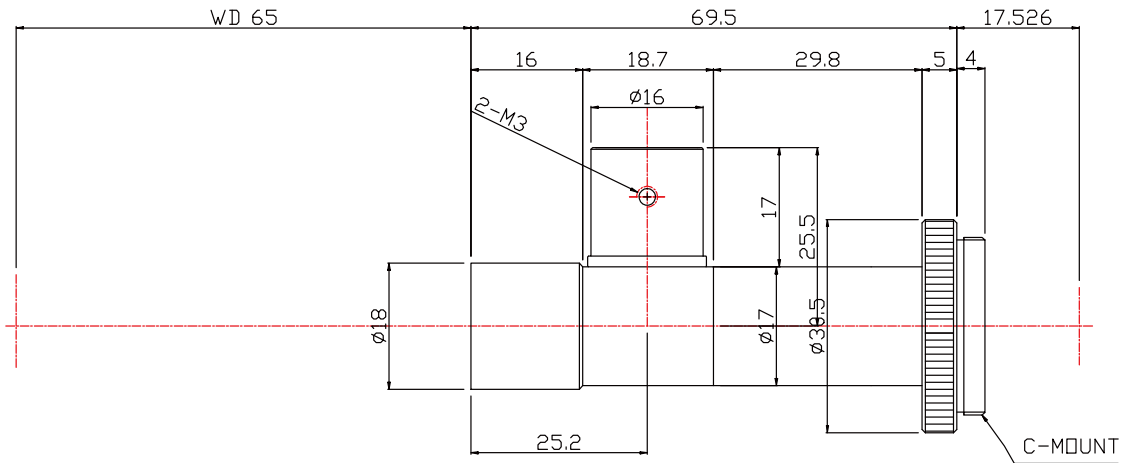


# TCST-20-65C



The Object Side Telecentric Lens TCST-20-65C is suitable for sensors with an image format of 1/2 inch.

## Technical Data

Art.Gr.	TEL
Magnification	2 X
Working Distance (WD)	65 mm
Depth of Field (DOF)	308 $\mu\text{m}$ @CoC 40 $\mu\text{m}$
Resolution (Object Side)	5.2 $\mu\text{m}$
Image Format (max.)	1/2 inch
Working F-Number	15.4
Numerical Aperture (NA)	0.065
Field of View (FOV)	3.2mm x 2.4mm @ 1/2
Telecentric Type	Object Side
Telecentricity	0.02 °
Optical Distortion (max.)	0.03 %
Mount Type	C-Mount

