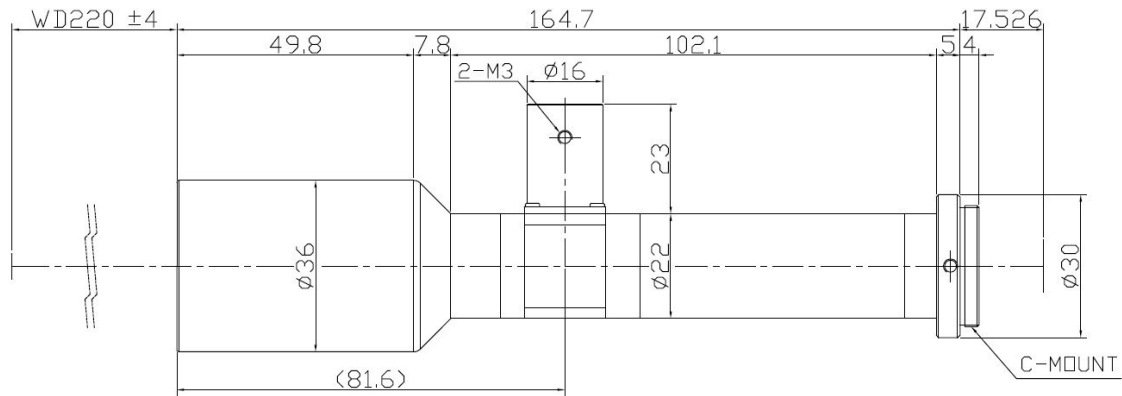


TCST-20-220C



The Object Side Telecentric Lens TCST-20-220C is suitable for sensors with an image format of 2/3 inch.

Technical Data

Art.Gr.	TEL
Magnification	2 X
Working Distance (WD)	220 mm
Depth of Field (DOF)	200 µm @CoC 40 µm
Resolution (Object Side)	6.71 µm
Image Format (max.)	2/3 inch
Working F-Number	20
Numerical Aperture (NA)	0.05
Field of View (FOV)	4.4mm x 3.3mm @ 2/3
Telecentric Type	Object Side
Telecentricity	0.03 °
Optical Distortion (max.)	0.07 %
Mount Type	C-Mount

