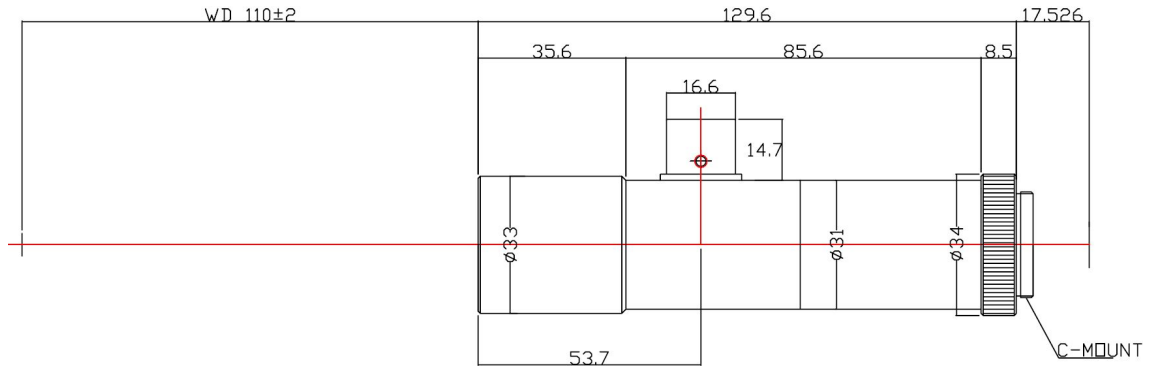


# TCHR-20-110C



The Object Side Telecentric Lens TCHR-20-110C is suitable for sensors with an image format of 2/3 inch.

## Technical Data

Art.Gr.	TEL
Magnification	2 X
Working Distance (WD)	110 mm
Depth of Field (DOF)	260 $\mu\text{m}$ @CoC 40 $\mu\text{m}$
Resolution (Object Side)	4.4 $\mu\text{m}$
Image Format (max.)	2/3 inch
Working F-Number	13
Numerical Aperture (NA)	0.07
Field of View (FOV)	4.4mm x 3.3mm @ 2/3
Telecentric Type	Object Side
Telecentricity	0.02 °
Optical Distortion (max.)	0.03 %
Mount Type	C-Mount

