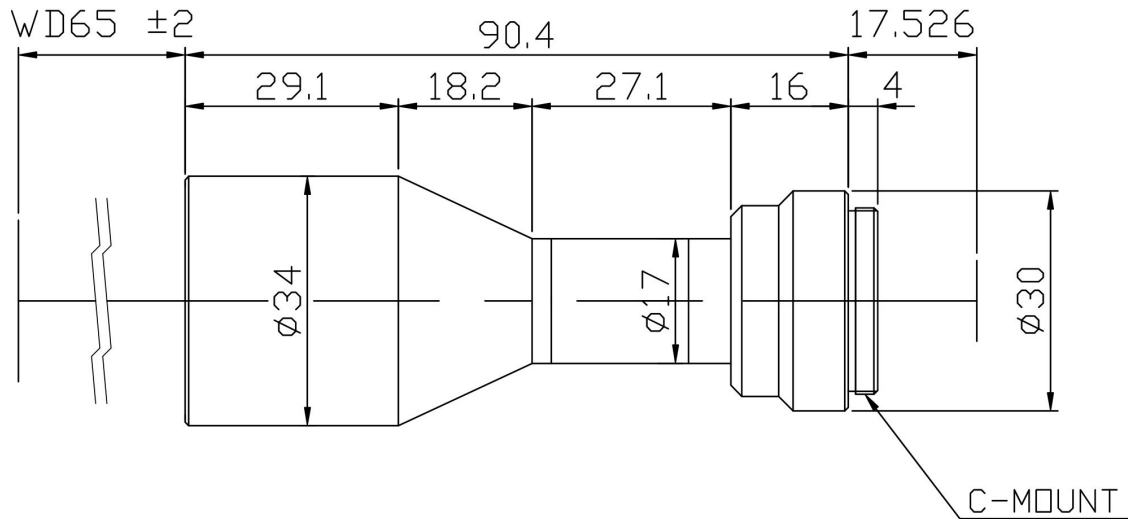


TCHR-05-65



The Object Side Telecentric Lens TCHR-05-65 is suitable for sensors with an image format of 2/3 inch.

Technical Data

Art.Gr.	TEL
Magnification	0.5 X
Working Distance (WD)	65 mm
Depth of Field (DOF)	1300 µm @CoC 40 µm
Resolution (Object Side)	11.2 µm
Image Format (max.)	2/3 inch
Working F-Number	8.3
Numerical Aperture (NA)	0.03
Field of View (FOV)	17.6mm x 13.2mm @ 2/3"
Telecentric Type	Object Side
Telecentricity	0.04 °
Optical Distortion (max.)	0.03 %
Mount Type	C-Mount

