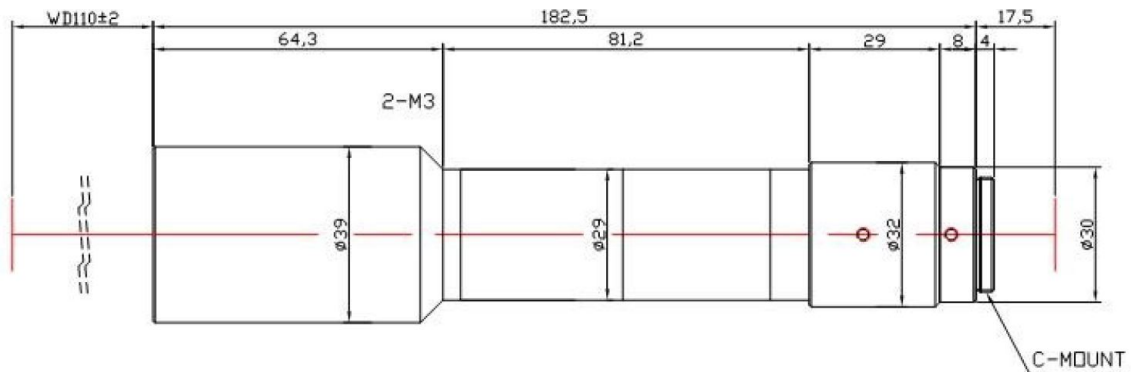


# TC4M-10-110



The Object Side Telecentric Lens TC4M-10-110 is suitable for sensors up to 4 megapixel and with an image format of 1 inch.

## Technical Data

Art.Gr.	TEL
Magnification	1 X
Working Distance (WD)	110 mm
Depth of Field (DOF)	352 µm @CoC 22 µm
Resolution (Object Side)	5.4 µm
Image Format (max.)	1 inch
Megapixel (max.)	4 MP
Working F-Number	8
Numerical Aperture (NA)	0.062
Field of View (FOV)	11.26mm x 11.26mm
Telecentric Type	Object Side
Telecentricity	0.03 °
Optical Distortion (max.)	0.03 %
Mount Type	C-Mount

