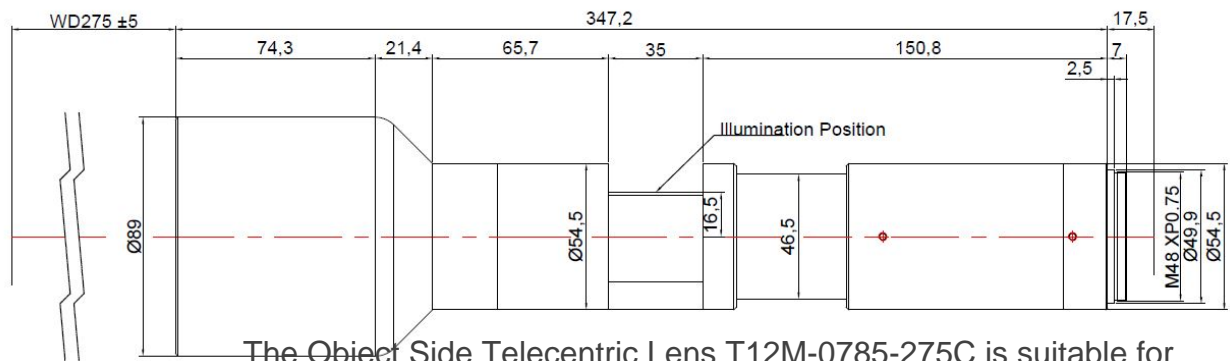
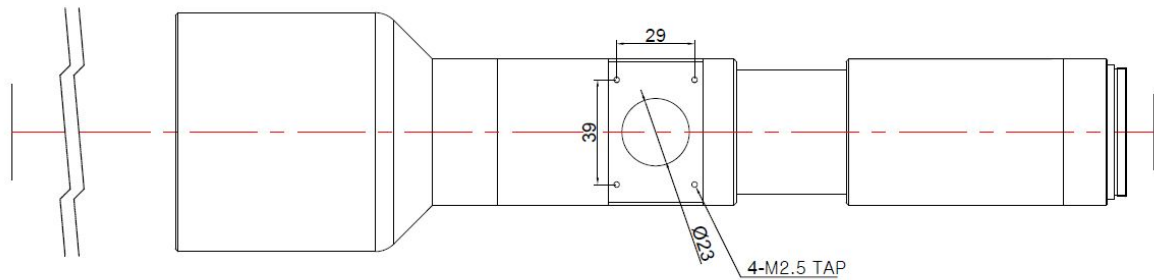


# T12M-0785-275C



The Object Side Telecentric Lens T12M-0785-275C is suitable for sensors up to 12 megapixel and with an image format of 28mm (diagonal).

## Technical Data

|                           |                   |
|---------------------------|-------------------|
| Art.Gr.                   | TEL               |
| Magnification             | 0.785 X           |
| Working Distance (WD)     | 275 mm            |
| Depth of Field (DOF)      | 528 µm @CoC 22 µm |
| Resolution (Object Side)  | 6.3 µm            |
| Image Format (max.)       | 28mm (diagonal)   |
| Megapixel (max.)          | 12 MP             |
| Working F-Number          | 7.4               |
| Numerical Aperture (NA)   | 0.053             |
| Field of View (FOV)       | 28.69mm x 21.52mm |
| Telecentric Type          | Object Side       |
| Telecentricity            | 0.03 °            |
| Optical Distortion (max.) | 0.01 %            |
| Mount Type                | M48               |

