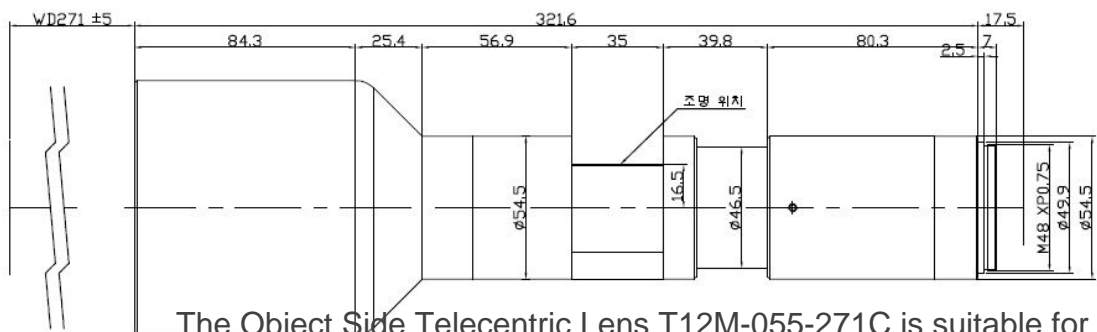
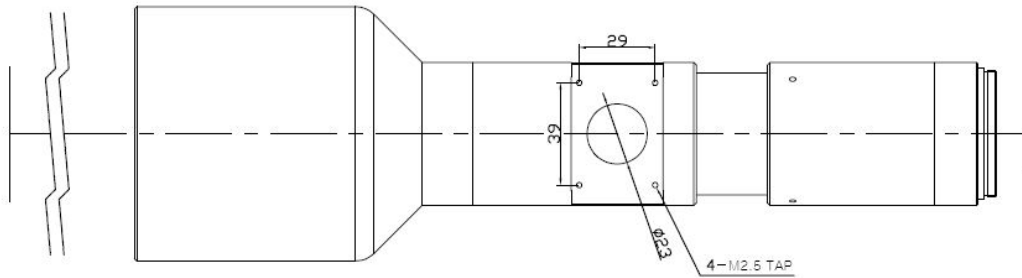


T12M-055-271C



The Object Side Telecentric Lens T12M-055-271C is suitable for sensors up to 12 megapixel and with an image format of 28mm (diagonal).

Technical Data

Art.Gr.	TEL
Magnification	0.55 X
Working Distance (WD)	271 mm
Depth of Field (DOF)	1000 μm @CoC 22 μm
Resolution (Object Side)	9.1 μm
Image Format (max.)	28mm (diagonal)
Megapixel (max.)	12 MP
Working F-Number	7.4
Numerical Aperture (NA)	0.037
Field of View (FOV)	40.96mm x 30.72mm
Telecentric Type	Object Side
Telecentricity	0.03 °
Optical Distortion (max.)	0.01 %
Mount Type	M48

