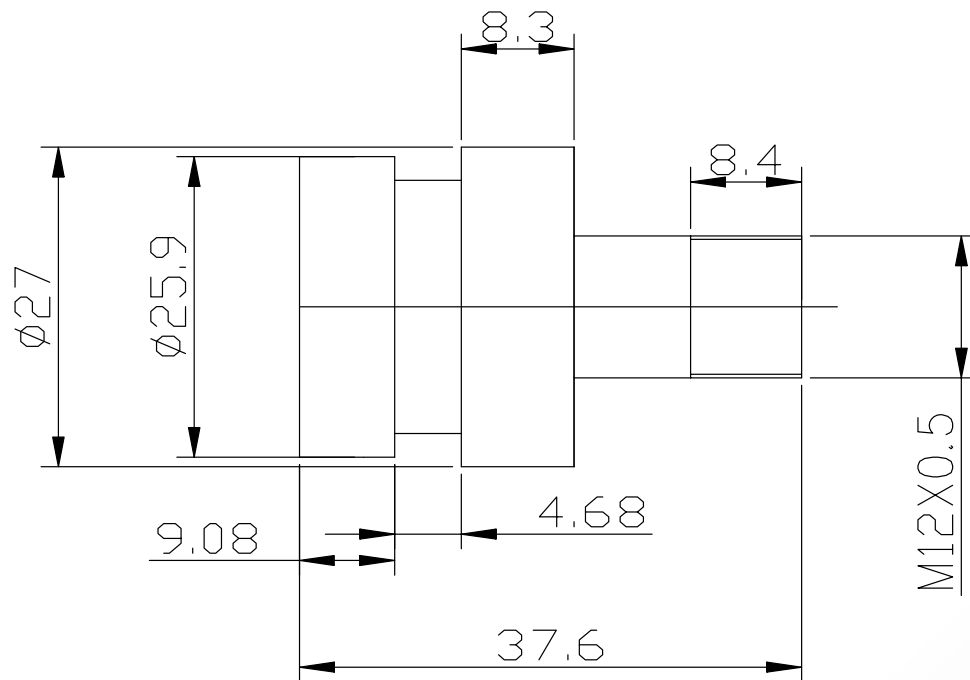


# Lensagon MB4012



The S-Mount lens Lensagon MB4012 is suitable for sensors below 1 megapixel with an image format of 1/3 inch. It is characterized by a particularly high light intensity.

## Technical Data

Mount	S-Mount
Sensor	1/3 inch
Focal Length	4 mm
Aperture	1.2
MOD	0.2 m
Back Focal	6.5 mm
IR Cut Filter	No
Weight	34 g
Iris	manual
Focus	fixed
Typ	Standard



Light Sensitive

