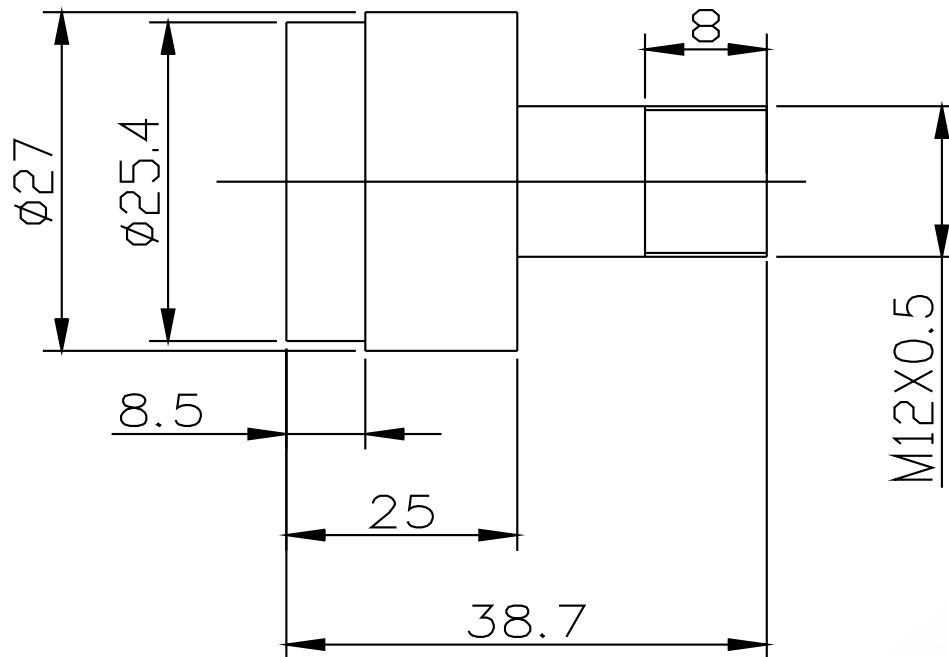


Lensagon MB12014



The S-Mount lens Lensagon MB12014 is suitable for sensors below 1 megapixel with an image format of 1/3 inch. It is characterized by a particularly high light intensity.

Technical Data

Mount	S-Mount
Sensor	1/3 inch
Focal Length	12 mm
Aperture	1.4
MOD	0.3 m
Back Focal	13.7 mm
IR Cut Filter	No
Weight	31.5 g
Iris	manual
Focus	fixed
Typ	Standard



Light Sensitive

