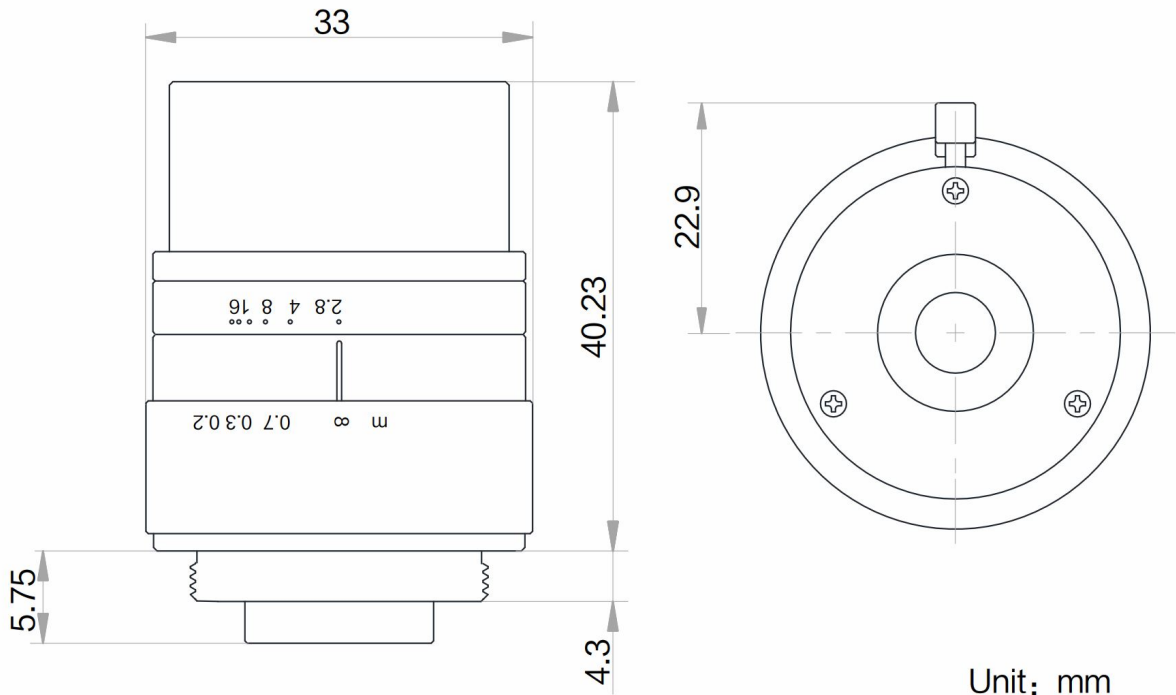


CK6M1228S118V2



Unit: mm

The C-Mount lens Lensagon CK6M1228S118V2 is suitable for current sensors up to 6 megapixel with an image format of 1/1.8 inch.

Technical Data

Mount	C-Mount
Sensor	1/1.8 - 1/2 inch Sensor
Focal Length	12 mm
Aperture	2.8
MOD	0.1 m
Angle of View	D:40.94° H:34.14° V:23.17°
Megapixel	6 MP
IR Cut Filter	No
TV Distortion	-0.005 %
Image Circle	9 mm
Weight	61.7 g
Iris	manual-lock
Focus	manual-lock
Filter	M27 P=0.5

6 Megapixel

