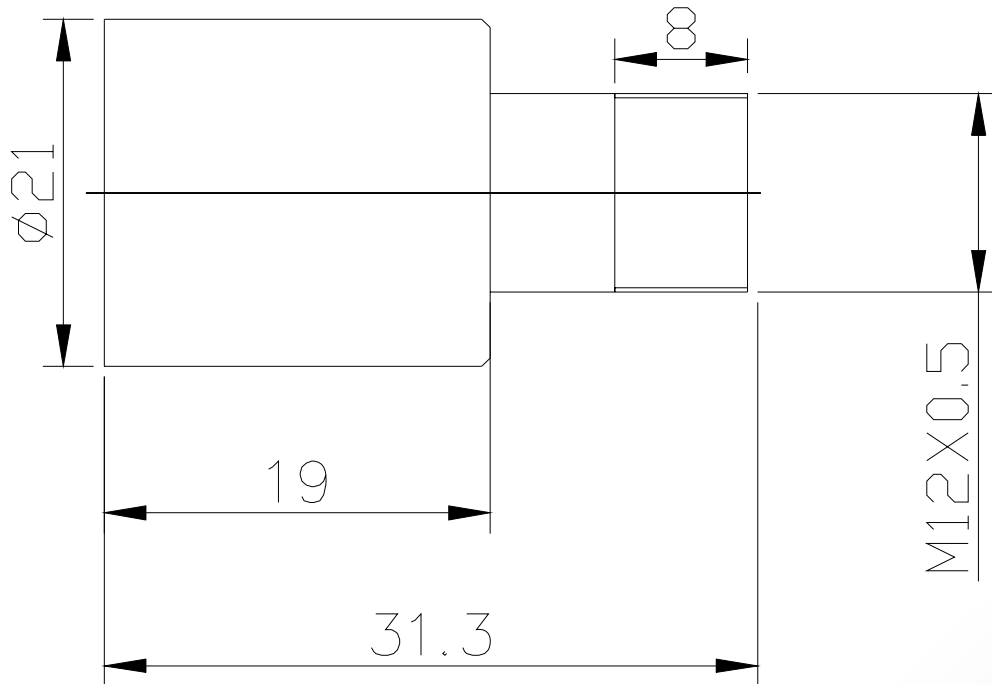


# Lensagon BL6012



The S-Mount lens Lensagon BL6012 is suitable for common sensors up to 1 megapixel with an image format of 1/3 inch. It is characterized by a particularly high light intensity.

## Technical Data

Mount	S-Mount
Sensor	1/3 inch
Focal Length	6 mm
Aperture	1.2
MOD	0.2 m
Back Focal	6.96 mm
Angle of View	D:55.6° H:44.5° V:33.4°
Megapixel	1-2 MP
IR Cut Filter	No
Weight	20 g
Iris	fixed
Focus	fixed
Typ	Standard



Light Sensitive



1 Megapixel