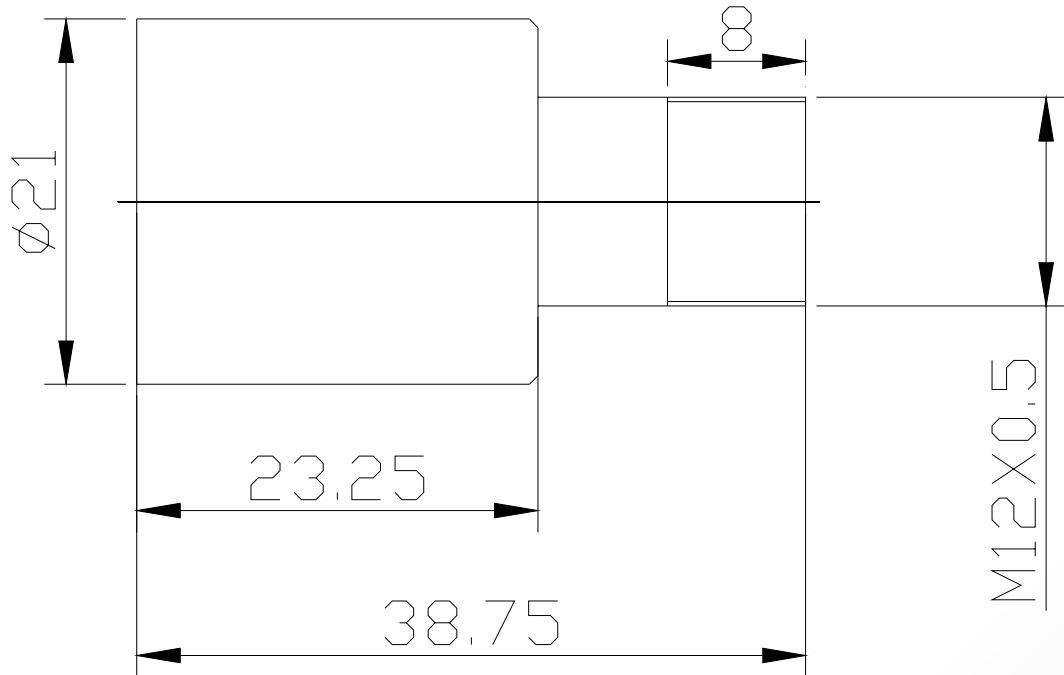


Lensagon BL12014



The S-Mount lens Lensagon BL12014 is suitable for common sensors up to 1 megapixel with an image format of 1/3 inch. It is characterized by a particularly high light intensity.

Technical Data

Mount	S-Mount
Sensor	1/3 inch
Focal Length	12 mm
Aperture	1.4
MOD	0.3 m
Back Focal	13.7 mm
Angle of View	D:37.4° H:29.9° V:22.4°
Megapixel	1-2 MP
IR Cut Filter	No
Weight	22 g
Iris	fixed
Focus	fixed
Typ	Standard



Light Sensitive



1 Megapixel

