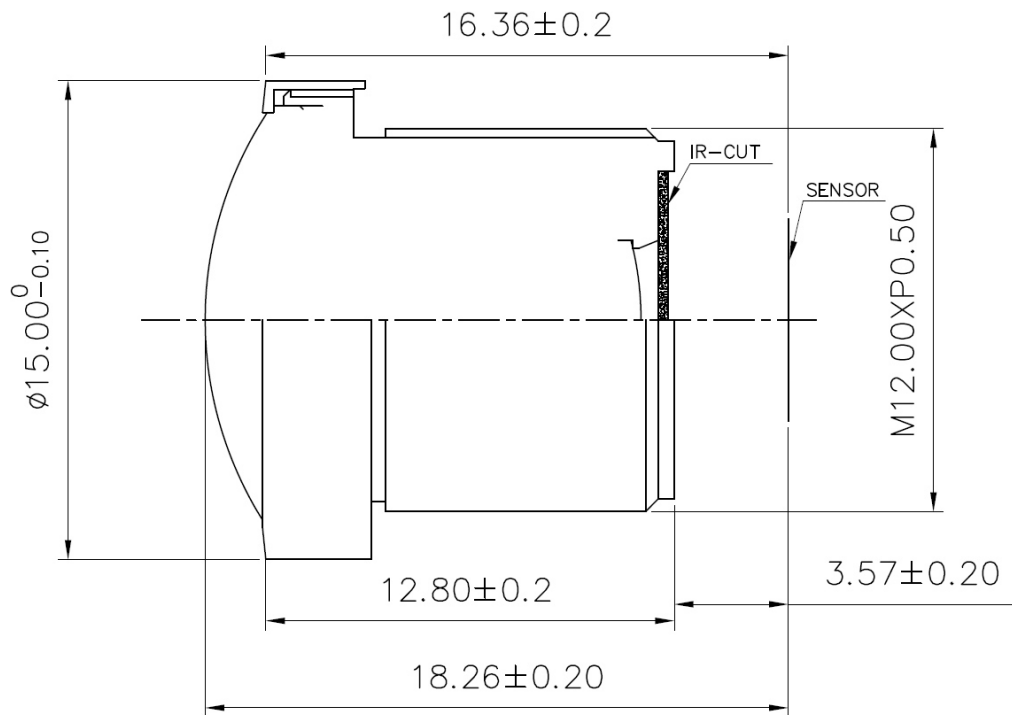


B8M2026S132C



The S-Mount lens Lensagon B8M2026S132C is suitable for current sensors up to 8.00 megapixel with an image format of 1/3.2 inch. f-Theta Distortion: -4%

Technical Data

| | |
|-----------------|------------------------------|
| Mount | S-Mount |
| Sensor | 1/3.2 inch |
| Focal Length | 2.01 mm |
| Aperture | 2.65 |
| MOD | 0.10 m |
| Back Focal | 3.57 mm |
| Angle of View | D:169.00° H:133.40° V:99.60° |
| Megapixel | 8.00 MP |
| IR Correction | yes |
| IR Cut Filter | yes |
| Weight | 5.10 g |
| Iris | fixed |
| Focus | fixed |
| Chief ray angle | 16.50 ° |
| Typ | Standard |

Hinweis:

8 Megapixel

